

Combo Graphic Console Module

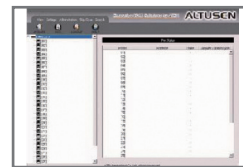
The KA9233 Combo Graphic Console Module offers secure access to the servers in a Matrix KVM Switch from a PS/2 or USB console (monitor, keyboard, and mouse) up to 300 meters away. It provides an extra computer port for integration with a computer workstation, enabling users to seamlessly switch between the local computer and the servers in the Matrix KVM Switch. The KA9233 also features an intuitive graphical user interface, the Graphical OSD, with easy-to-use menus and icons that enable easy access and efficient management.



▲ Combo Graphic Console

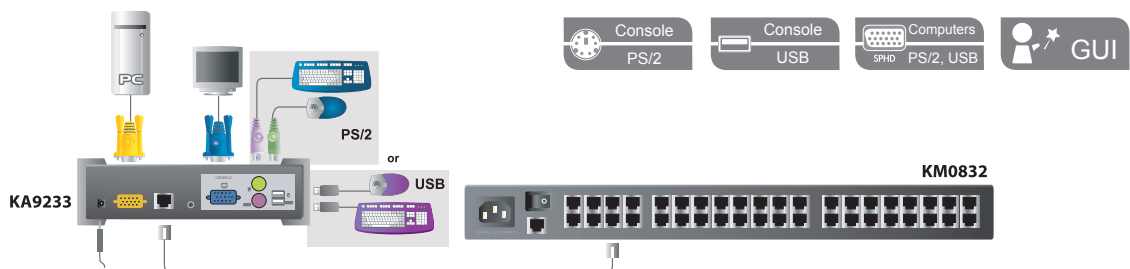


▲ Manual video gain control



◀ Graphical OSD

Diagram



Features

- One Combo Graphic Console Module can control a local computer and a matrix KVM switch
- Supports PS/2 and USB keyboards and mice
- Switch between your workstation computer and the matrix KVM switch
- **New Graphical OSD**—intuitive, easy-to-use graphical On Screen Display to manage servers
- Automatically scan attached servers at regular intervals
- Supports three-level user access control with password authentication for enhanced security protection
- Connects to matrix KVM switch via Cat 5 (or higher) cable
- Superior video quality—2048 x 1536 @ 60Hz for up to 10m for local computer; 1024 x 768 @ 60Hz for up to 300 meters from Combo Graphic Console Module to KVM adapter cable
- Full-screen graphical OSD (800 x 600, 16-bit color)
- Automatic video gain control
- Manual video gain control for fine tuning
- Convenient computer selection via intuitive hotkey combinations or graphical OSD menus
- Supports Logitech and Microsoft wireless mice
- LCD, VGA, SVGA, XGA, and MultiSync support; DDC2B (local computer)
- No software to install
- Built-in ASIC for greater reliability and compatibility
- Free lifetime flash firmware upgrades

Specifications

Function		KA9233	
Computer Connections		1	
Console Connections		1	
Port Selection		OSD, Hotkey	
Connectors	Console Ports	Keyboard	1 x USB Type A Female (White) 1 x 6-pin Mini-DIN Female (Purple)
		Video	1 x HDB-15 Female (Blue)
		Mouse	1 x USB Type A Female (White) 1 x 6-pin Mini-DIN Female (Green)
	KVM Ports	1 x SPHD-15 Female (Yellow)	
	Link	1 x RJ-45 Female	
	F/W Upgrade	1 x 4-conductor 3.5mm Jack	
Switches	Power	1 x DC Jack	
	Select	1 x Pushbutton	
	Video Gain Adjustment	2 x Pushbutton	
LEDs	Link	1 (Green)	
	Local	1 (Orange)	
	Remote	1 (Orange)	
Emulation	Keyboard/Mouse	PS/2; USB (PC, Mac, Sun)	
Video		1024x768@60Hz (300m Max.)	
Scan Interval		1-240 Seconds	
Power Consumption		DC 5.3V, 6W	
Environment	Operating Temp.	0-50°C	
	Storage Temp.	-20-60°C	
	Humidity	0-80% RH, Non-condensing	
Physical Properties	Housing	Metal	
	Weight	1.20 kg	
	Dimensions (L x W x H)	16.60 x 21.50 x 4.50 cm	

* The specifications and pictures are subject to change without notice.