



mydlink™ Home

# Battery Motion Sensor



Be alerted when motion is detected in your home,  
wherever you are<sup>1</sup>

DCS-Z120

# Battery Motion Sensor

Wherever you are, be alerted when motion is detected in your home with the mydlink™ Home Battery Motion Sensor. It's easy to setup and manage with the mydlink Home app, and connects to your router via the mydlink Home - Connect Home Hub<sup>1</sup>. Whether you are at home or away, push notifications will alert you whenever motion is detected. What's more, it works with other mydlink Home smart devices to enable you to create a smart home without complicated setup, installation cost or monthly subscription charges.

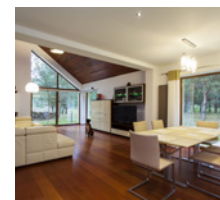


## Peace of mind

When you are away from home, be alerted instantly on your smartphone or tablet whenever motion is detected. Battery powered means that it can be placed virtually anywhere within your home.

## 3-in-1 Sensor

Monitor temperature and illumination allowing you to automatically turn on a heater when it gets too cold or turn the light on when it gets too dark.



## Set-up, control, monitor and protect your home.

The mydlink Connected Home Hub acts as the link between your existing Wi-Fi network and all mydlink™ home devices.

## Easy to Setup

### App

Download the free mydlink Home app<sup>2</sup>, follow the simple setup instructions



### Press

Push the pairing button to connect to your mydlink Home Connected Home Hub



### Mount

Use the included adhesive tapes to attach the sensor to the door or window you want to monitor



### 3-in-1 sensor

Motion sensor, temperature monitor and light sensor.

### Battery powered

Up to 2 years battery life

### Do-it-yourself

Easy to set-up and manage with the mydlink Home app

### Secure

Tamper-proof and supports AES128 bits encryption

### Push notification

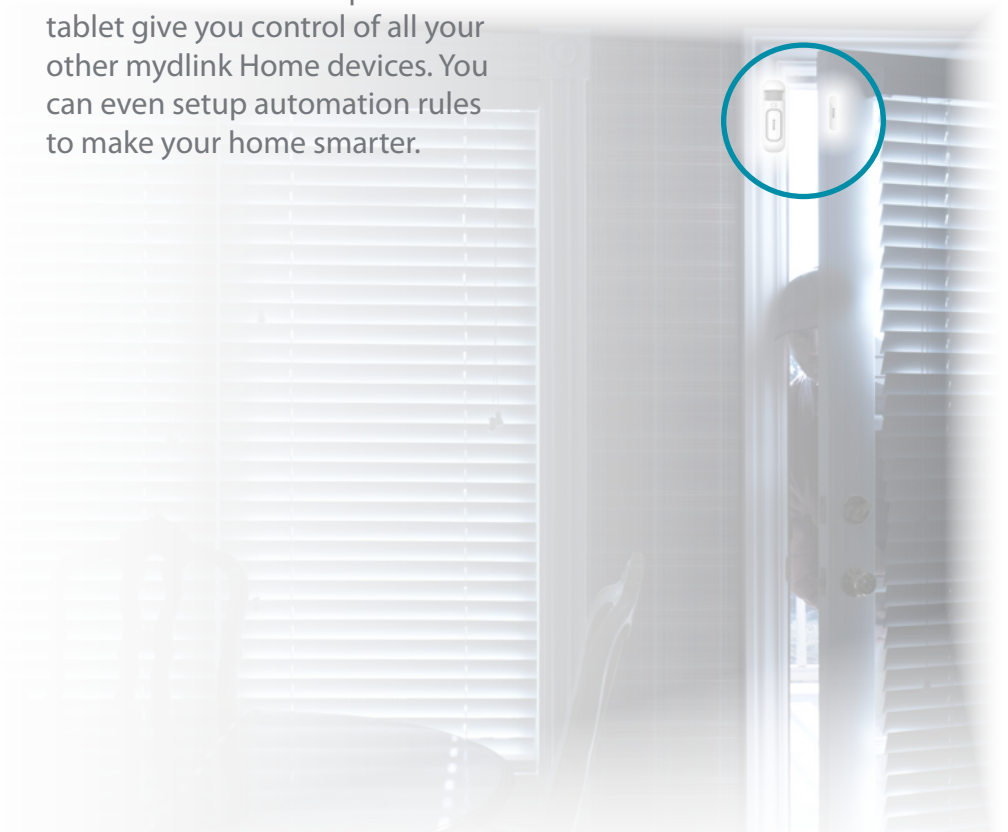
Receive instant alerts on your smartphone and tablet

### Instant alert

Pair with mydlink Home Siren for additional security

### Your mydlink Home

mydlink Home allows you to start with a single smart device and add more when you want to. Unique mydlink Home App for iOS and Android smartphone and tablet give you control of all your other mydlink Home devices. You can even setup automation rules to make your home smarter.

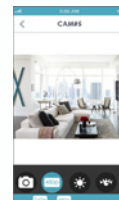


No hidden charges. Seriously.



### Complete your mydlink Home

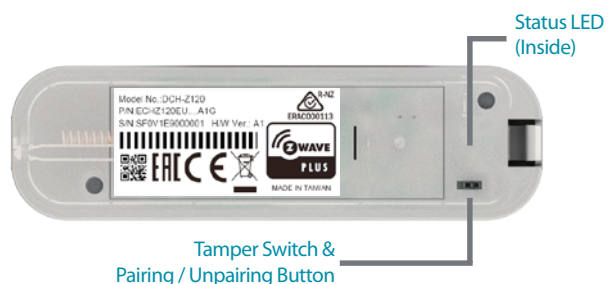
Why not add a **Siren (DCH-Z510)** to be alerted with a loud intruder alarm when the door is opened ...or add a **Monitor 360 (DCS-5010L)** to see what's happening at home immediately



Front View



Back View



## Technical Specifications

General	
Networking Protocol Support	• Z-Wave v6.02 or above
Z-Wave Wireless	<ul style="list-style-type: none"> <li>• 868.40 MHz (Europe / China / Singapore / South Africa)</li> <li>• 908.40 MHz (United States / Canada / Mexico / Chile)</li> <li>• 916.00 MHz (Israel)</li> <li>• 919.80 MHz (Hong Kong)</li> <li>• 921.40 MHz (Australia / New Zealand / Brazil)</li> <li>• 922.50 / 923.90 / 926.30 MHz (Taiwan / JP)</li> </ul>
PIR Range	• Maximum 10 meters
Buttons	• Tamper switch & pairing/unpairing button
LED	• Status
Physical	
Dimensions	• Sensor: 96 x 28 x 23 mm (3.78 x 1.10 x 0.91 inches)
Power	• Included 3 V battery (CR123A)
Temperature	<ul style="list-style-type: none"> <li>• Operating: -10 to 40 °C (14 to 104 °F)</li> <li>• Storage: -20 to 70 °C (-4 to 158 °F)</li> </ul>
Humidity	<ul style="list-style-type: none"> <li>• Operating: 20% to 90% non-condensing</li> <li>• Storage: 5% to 95% non-condensing</li> </ul>
Certifications	<ul style="list-style-type: none"> <li>• FCC</li> <li>• CE</li> <li>• Z-Wave Plus</li> </ul>

<sup>1</sup> Require mydlink™ Home - Connected Home Hub (DCH-G020) which is not included in this pack  
<sup>2</sup> Please refer to the mobile app's store page to check whether your device is compatible.



For more information: [www.dlink.com](http://www.dlink.com)

D-Link European Headquarters. D-Link (Europe) Ltd., D-Link House, Abbey Road, Park Royal, London, NW10 7BX. Specifications are subject to change without notice. D-Link is a registered trademark of D-Link Corporation and its overseas subsidiaries. All other trademarks belong to their respective owners. ©2015 D-Link Corporation. All rights reserved. E&OE.

Updated May 2015

