

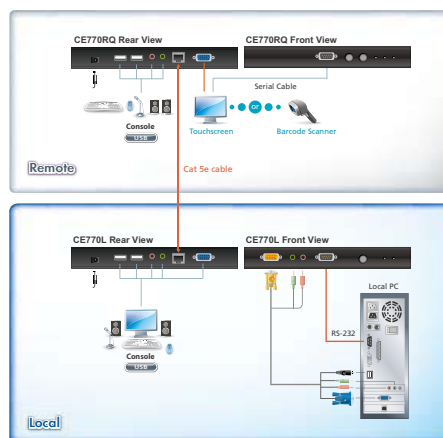
# CE770

## USB KVM Extender

The CE770 is a USB based KVM Extender with Deskew function. The automatic signal compensation and RS-232 serial functionality allow access to a computer system from a remote USB console.

The CE770 supports RGB delay tuner to manually synchronize the RGB signals. This allows users to deploy system equipment over large distances. The CE770's line synchronizing function corrects color phase and timing errors that occur over long distance transmissions. It also enables you to manually tune the R/G/B signal settings.

### Setup



### Features

- Local and Remote Units connect at distances up to 300 m using Cat 5e cable
- Dual console operation – control your system from both the local and remote USB keyboard, monitor, and mouse consoles
- Deskew Function – automatically synchronizes the time delay of RGB signals to compensate for distance
- Built-in ASIC for greater reliability and compatibility
- Auto Signal Compensation (ASC)
- RS-232 serial ports – allow you to connect to a serial terminal, or serial devices such as touchscreens and barcode scanners
- Sun/Mac keyboard support and emulation\*
- Audio Enabled – supports stereo speakers and microphone
- USB overcurrent detection and prevention
- Pushbutton operating mode selection (Local Unit only) – select between Local and Auto operating modes, with the press of a single button
- Built-in 8KV/15KV ESD protection (Contact voltage 8KV; Air voltage 15KV) and 2KV surge protection
- High resolution video – up to 1920 x 1200@60Hz (150 m); 1280 x 1024@60Hz (300 m)
- Superior Audio – no loss in audio quality at 300 m
- Supports Wide Screen formats
- Supports VGA, SVGA, SXGA (1280 x 1024), UXGA (1600 x 1200), WUXGA (1920 x 1200) and multisync monitors; local monitor supports DDC; DDC2; DDC2B
- Hot pluggable
- Rack mountable
- Easy to install – no software required – connecting cables to the devices is all it takes

1. PC keyboard combinations emulate Sun/Mac keyboards
2. Sun/Mac keyboards only work with their own computers

### Specifications

Function			CE770L	CE770R
Connectors	Console Ports	Keyboard	1 x USB Type A Female (White)	
		Video	1 x HDB-15 Female (Blue)	
		Mouse	1 x USB Type A Female (White)	
		Speakers	1 x Mini Stereo Jack Female (Green)	
		Mic.	1 x Mini Stereo Jack Female (Pink)	
	KVM Ports	RS-232	1 x DB-9 Female (Black)	1 x DB-9 Male (Black)
		Keyboard / Video / Mouse	1 x SPHD-17 Female (Yellow)	N/A
		Speakers	1 x Mini Stereo Jack (Green)	
		Mic.	1 x Mini Stereo Jack (Pink)	
	Unit to Unit		1 x RJ-45 Female (Black)	
Power		1 x DC Jack (Black)		
LEDs	Local		1 (Green)	N/A
	Remote		1 (Green)	N/A
	B		N/A	1 (Blue)
	G	Link	N/A	1 (Orange/Green)
	R	Remote	N/A	1 (Red)
Pushbuttons	Operating Mode Selection		1 x Pushbutton	N/A
	Color / Up		N/A	1 x Pushbutton
	Select / Down		N/A	1 x Pushbutton
Emulation	Keyboard / Mouse		USB	
Video			1920 x 1200 @ 60Hz (150 m); 1280 x 1024 @ 60Hz (300m); DDC, DDC2, DDC2B	
Power Consumption			DC5.3V/3.5W	DC5.3V/5.1W
Environment	Operating Temp.		0~50°C	
	Storage Temp		-20~60°C	
	Humidity		0~80% RH, Non-condensing	
Physical Propert	Housing		Metal	
	Weight		0.49 kg	0.48 kg
	Dimensions(L x W x H)		20.00 x 8.00 x 2.50 cm	

\* The specifications and pictures are subject to change without notice.