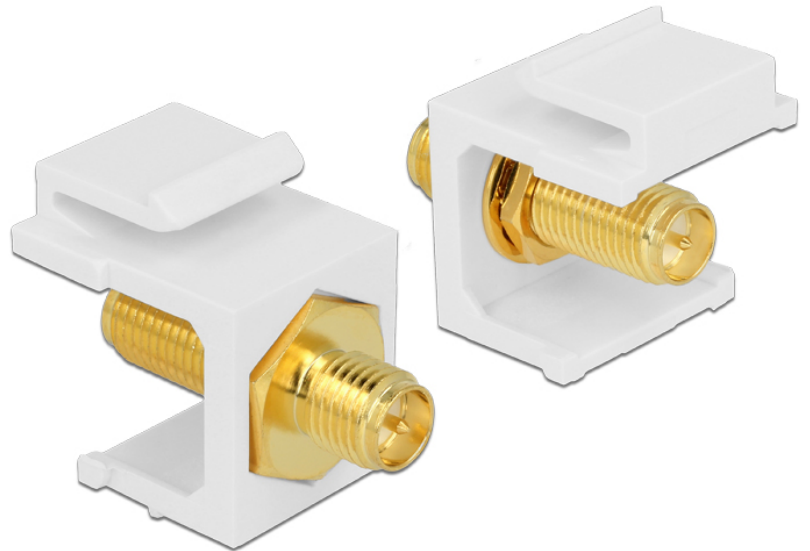


# Delock Keystone module RP-SMA female > RP-SMA female

## Description

This module by Delock can be used to extend an RP-SMA-connection. With its standardised dimensions it can be used for easy snap-in mounting in e. g. a Keystone patchpanel, face plate or surface-mount box.



## Specification

- Connector: RP-SMA female > RP-SMA female
- Impedance 50 Ohm
- For Keystone ports with 19.2 x 14.9 mm
- Dimensions (LxWxH): 24.5 x 22.3 x 16.3 mm
- Length in front of the panel: 7.1 mm

## Item No. 86356



EAN 4043619863563

Country of origin Taiwan, Republic of  
China

## Package content

- Keystone module

## Package

- Poly bag