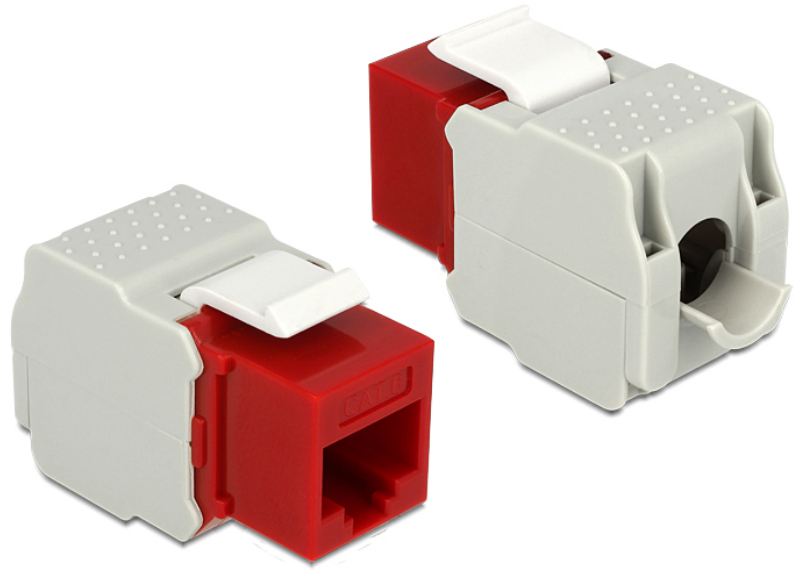


# Delock Keystone Module RJ45 female > LSA Cat.6 UTP red

## Description

This module by Delock can be used to connect twisted pair cable to an RJ45 female port. With its standardised dimensions it can be used for easy snap-in mounting in e. g. a Keystone patchpanel, face plate or surface-mount box.



## Specification

- Connector: RJ45 female (8P/8C) > LSA (toolless)
- Unshielded (Cat.6)
- Compliant with Cat.6 requirements of ISO/IEC 11801 Edition 2.2, EN 50173-1:2011 and EN 60603-7-4, and ANSI/TIA 568-C.2
- For Keystone ports with 19.2 x 14.9 mm
- Dimensions (LxWxH): ca. 41 x 24.5 x 18.1 mm

## Item No. 86344



EAN 4043619863440

Country of origin China

## Package content

- Keystone module
- Cover
- Zip-tie

## Package

- Poly bag

## Images

