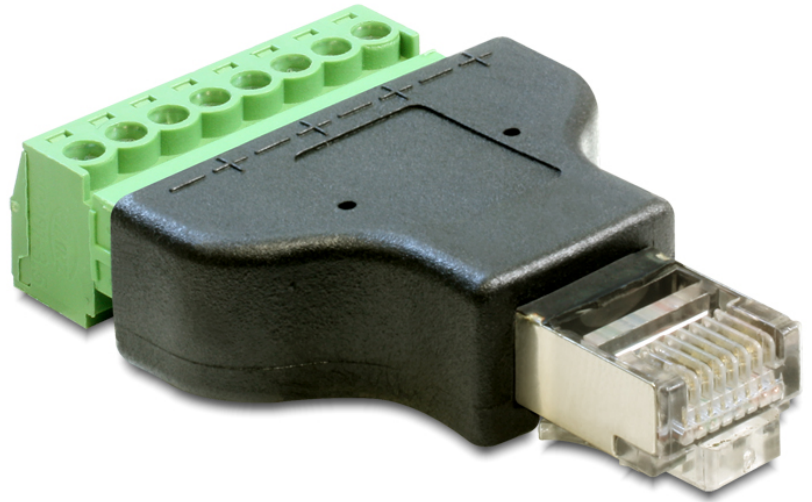


Delock Adapter RJ45 male > Terminal Block 8 pin 2-parts

Description

This RJ45 to Terminal Block adapter is made for special industrial application e.g. for connecting single wires with open cable heads. With this adapter you have the possibility to take off the end of the Terminal Block (with the screws).



Specification

- Connector: RJ45 8 pin male > Terminal Block 8 pin
- Pitch: 3.5 mm
- Removable Terminal Block
- Dimension (LxWxH): ca. 53.7 x 34 x 12.9 mm

Item No. 65389



EAN 4043619653898

Country of origin China

Package content

- Adapter

Package

- Poly bag

Images

